

GENERAL NOTES

- THIS DRAWING IS DIAGRAMMATIC. IT IS FOR GENERAL INFORMATION AND SAMPLE LOCATIONS.
- ACCESSIBLE SPACES WERE SURVEYED FOR SUSPECT HAZARDOUS MATERIALS. WHEN OBSERVED, THE MATERIALS WERE NOTED ON THE DRAWING.

LEGEND

- NON-ASBESTOS FLOOR TILE WITH ASBESTOS-CONTAINING MASTIC CONCEALED UNDER NON-ASBESTOS CARPET
- NON-ASBESTOS FLOOR TILE WITH ASBESTOS-CONTAINING MASTIC
- ASBESTOS-CONTAINING SHEET FLOOR COVERING CONCEALED UNDER NON-ASBESTOS FLOORING

ASBESTOS SAMPLE SYMBOLS

- 007 - DRAWING REFERENCE TO BULK SAMPLE FIELD CODE, SEE INVENTORY OF SAMPLES
- MATERIAL SYMBOL
- NOT TESTED: ○
- NEGATIVE: ⊖
- POSITIVE: ●
- THERMAL SYSTEM INSULATION: ◻
- SURFACING MATERIAL: ◼
- MISCELLANEOUS MATERIAL: ◇

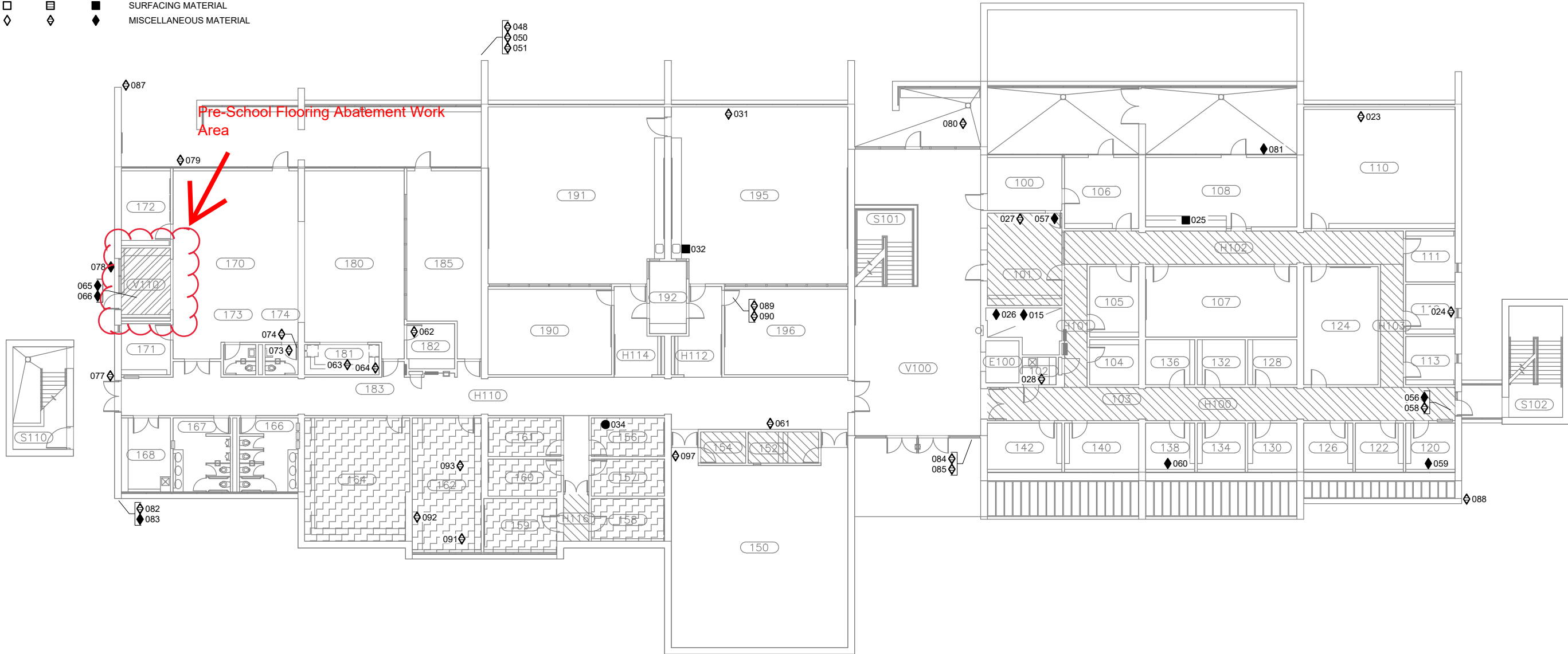
INVENTORY OF ASBESTOS SAMPLES

DRAWING REFERENCE	FIELD CODE	LAB RESULT	MATERIAL SAMPLED
015	52611.003-0015	(-/+)	MATERIAL DEBRIS
023	52611.003-0023	(-/-)	WINDOW SEALANT
024	52611.003-0024	(-/-)	WINDOW SEALANT
025	52611.003-0025	(+)	SINK UNDERCOATING
026	52611.003-0026	(+/-)	GYPSUM WALLBOARD
027	52611.003-0027	(-/-)	THIN COAT PLASTER/ GYPSUM WALLBOARD
028	52611.003-0028	(-/-)	GYPSUM WALLBOARD/ JOINT COMPOUND
031	52611.003-0031	(-)	FIBERGLAS INSULATION
032	52611.003-0032	(+)	SINK UNDERCOATING
034	52611.003-0034	(+)	MECHANICAL INSULATION BOARD
056	52611.003-0056	(-/+)	VINYL FLOOR TILE/MASTIC
057	52611.003-0057	(-/+)	VINYL FLOOR TILE/MASTIC
058	52611.003-0058	(-/-)	COVEBASE/MASTIC
059	52611.003-0059	(+/-)	FOAM BOARD/MASTIC
060	52611.003-0060	(+/-)	FOAM BOARD/MASTIC
061	52611.003-0061	(-/-)	VINYL FLOOR TILE/MASTIC
062	52611.003-0062	(-/-)	VINYL FLOOR TILE/MASTIC
063	52611.003-0063	(-/-)	VINYL FLOOR TILE/MASTIC
064	52611.003-0064	(-/-)	COVEBASE/MASTIC
065	52611.003-0065	(-/-/+)	SHEET FLOOR COVERING/ SHEET FLOOR COVERING
066	52611.003-0066	(-/-/+)	SHEET FLOOR COVERING/ SHEET FLOOR COVERING

INVENTORY OF ASBESTOS SAMPLES (CONTINUED)

DRAWING REFERENCE	FIELD CODE	LAB RESULT	MATERIAL SAMPLED
073	52611.003-0073	(-/-)	CERAMIC TILE/GROUT
074	52611.003-0074	(-/-/-)	CERAMIC TILE/GROUT
077	52611.003-0077	(-)	DOOR FRAME SEALANT
078	52611.003-0078	(+)	WINDOW GLAZING COMPOUND
079	52611.003-0079	(-)	SEALANT
080	52611.003-0080	(-)	DAMP PROOFING
081	52611.003-0081	(+)	WINDOW GLAZING COMPOUND
082	52611.003-0082	(-/-)	WINDOW FRAME SEALANT/GASKET
083	52611.003-0083	(+)	WINDOW GLAZING COMPOUND
084	52611.003-0084	(-)	DOOR FRAME SEALANT
085	52611.003-0085	(-)	CEMENT PLASTER
086	52611.003-0086	(-)	CEMENT PLASTER
087	52611.003-0087	(-/-)	BRICK/MORTAR
088	52611.003-0088	(-/-)	BRICK/MORTAR
089	52611.003-0089	(-/-)	THIN COAT PLASTER/ GYPSUM WALLBOARD
090	52611.003-0090	(-)	DUCT TAPE
091	52611.003-0091	(-/-)	GYPSUM WALLBOARD/ JOINT COMPOUND
092	52611.003-0092	(-/-)	GYPSUM WALLBOARD/ JOINT COMPOUND
093	52611.003-0093	(-/-)	GYPSUM WALLBOARD/ JOINT COMPOUND
097	52611.003-0097	(-/-)	ACOUSTICAL CEILING TILE/MASTIC

Attachment E to ITB2024-06 Asbestos Survey Report



FIRST FLOOR - FLOORING MATERIALS



SCALE: 1" = 10'
0 5' 10' 20'

HAZARDOUS MATERIAL SURVEY PLAN
EDUCATION PSYCHOLOGY BUILDING
 370 S MOUNTAIN AVENUE, ASHLAND, OREGON

NO	REVISION	DATE	BY	APPD

DRAWN BY: JAB
 CHECKED: AL
 DATE: MAY 2024
 PROJECT NUMBER: 52611.003 0001

SHEET DRAWING NO:
HS2
 SHEET 2 OF 9



<u>Code</u>	<u>Material</u>	<u>Location</u>	<u>Results</u>	<u>Lab</u>
52611.003-0062	Vinyl Floor Tile/Mastic	Room 182, at threshold		NVL Labs, Inc.
	Layer:	Description:	Analysis:	
	Layer 1	White vinyl tile	No Asbestos Detected	
	Layer 2	Tan soft mastic	No Asbestos Detected	
	Layer 3	Gray brittle material with granules	No Asbestos Detected	
52611.003-0063	Vinyl Floor Tile/Mastic	Room 181, kitchen area		NVL Labs, Inc.
	Layer:	Description:	Analysis:	
	Layer 1	White vinyl tile	No Asbestos Detected	
	Layer 2	Tan soft mastic	No Asbestos Detected	
52611.003-0064	Covebase/Mastic	Room 181, at East wall		NVL Labs, Inc.
	Layer:	Description:	Analysis:	
	Layer 1	Blue rubbery material	No Asbestos Detected	
	Layer 2	Beige hard mastic	No Asbestos Detected	
	Layer 3	Brown brittle mastic with paint	No Asbestos Detected	
52611.003-0065	Sheet Floor Covering/Sheet Floor Covering	Room 170, at West entry space (V110)		NVL Labs, Inc.
	Layer:	Description:	Analysis:	
	Layer 1	Gray sheet vinyl	No Asbestos Detected	
	Layer 2	Beige paper backing with soaked in tan mastic	No Asbestos Detected	
	Layer 3	Tan sheet vinyl	No Asbestos Detected	
	Layer 4	Off-white paper backing with soaked in beige mastic	48% Chrysotile	
52611.003-0066	Sheet Floor Covering/Sheet Floor Covering	Room 170, at West entry space (V110)		NVL Labs, Inc.
	Layer:	Description:	Analysis:	
	Layer 1	Gray sheet vinyl	No Asbestos Detected	
	Layer 2	Beige paper backing with soaked in tan mastic	No Asbestos Detected	
	Layer 3	Tan sheet vinyl	No Asbestos Detected	
	Layer 4	Off-white paper backing with soaked in beige mastic	50% Chrysotile	

<u>Code</u>	<u>Material</u>	<u>Location</u>	<u>Results</u>	<u>Lab</u>	
52611.003-0073	Ceramic Tile/Grout	Room 174 at threshold		NVL Labs, Inc.	
		Layer:	Description:		Analysis:
		Layer 1	Light brown ceramic tile with white spots		No Asbestos Detected
		Layer 2	Gray cementitious material	No Asbestos Detected	
52611.003-0074	Ceramic Tile/Grout	Room 174 at wall base		NVL Labs, Inc.	
		Layer:	Description:		Analysis:
		Layer 1	Light brown ceramic tile with white spots		No Asbestos Detected
		Layer 2	Light brown soft material with adhesive and debris		No Asbestos Detected
		Layer 3	Tan soft mastic with debris		No Asbestos Detected
		Layer 4	Gray cementitious material with debris	No Asbestos Detected	