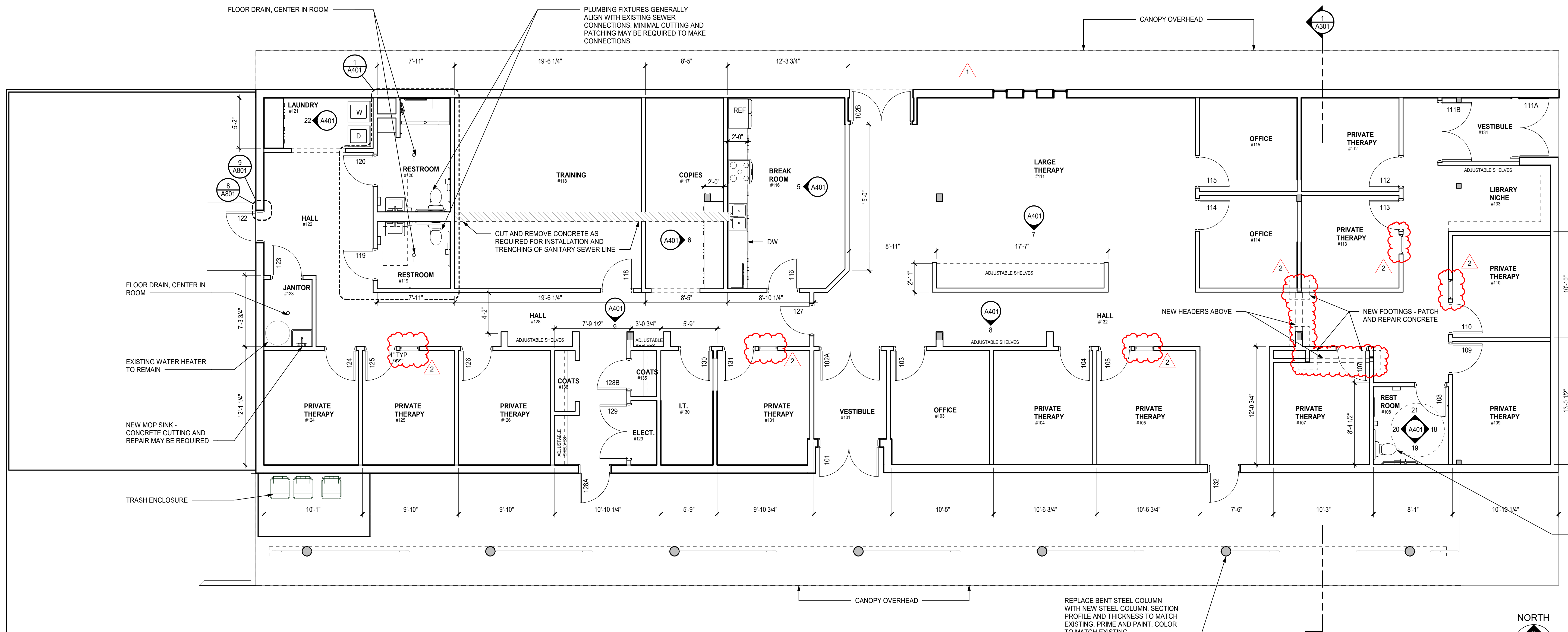


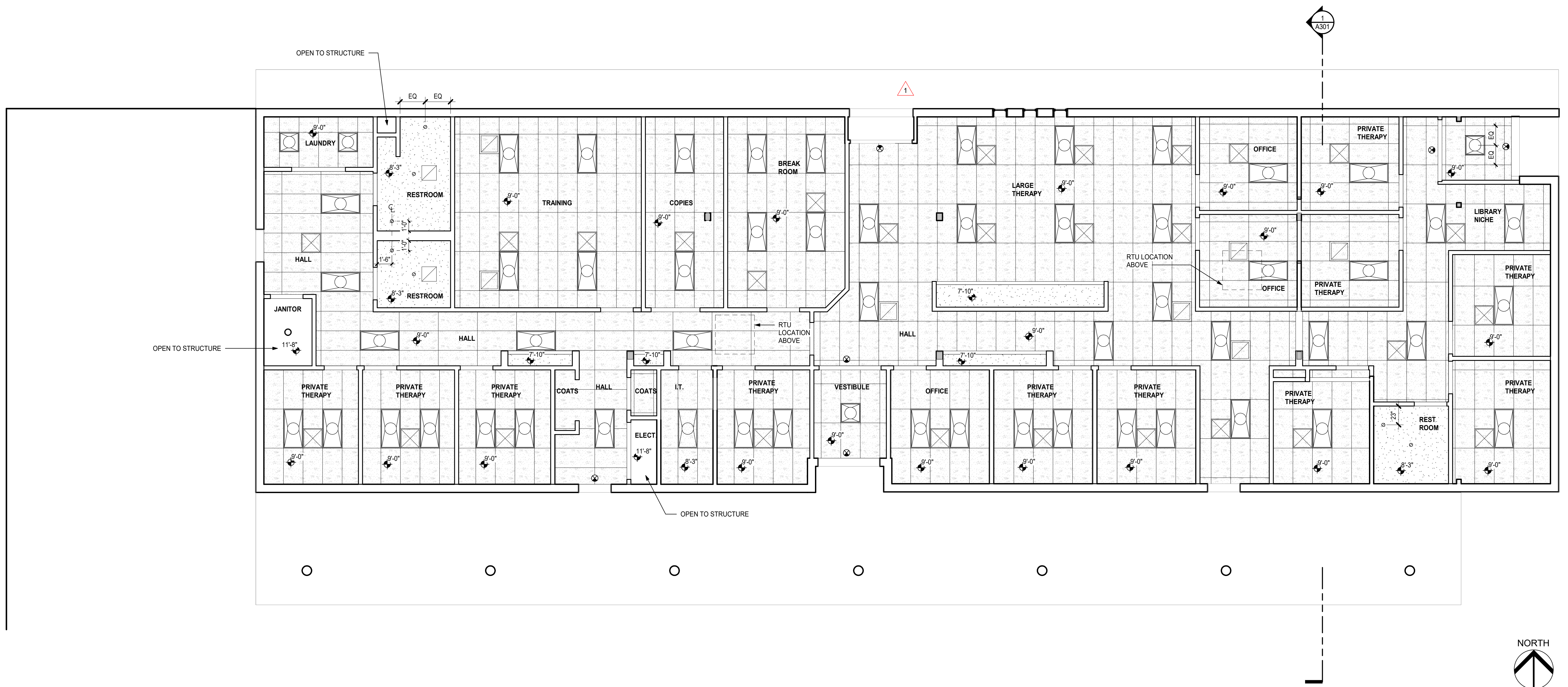
FLOOR PLAN SHEET NOTES

1. ANY INTERIOR WALL NOT LABELED WITH A WALL TAG SHALL BE WALL TYPE: W01.
2. REFER TO SHEET A100 FOR INTERIOR PARTITION TYPES AND KEY.
3. REFER TO DIMENSIONAL STANDARDS ON C101.
4. ALL ACOUSTIC WALL SEPARATIONS MUST BE SEALED FOR SOUND TRANSMISSION.
5. ALL EXISTING COLUMNS TO REMAIN.



1 FLOOR PLAN

A202 (3/16" = 1'-0")



2 REFLECTED CEILING PLAN

A202 (3/16" = 1'-0")

RCP SHEET NOTES

1. REFER TO ENGINEER'S DRAWINGS FOR LIGHT SWITCHING AND SPECIFICATION, EXIT SIGN LOCATIONS, AND ELECTRICAL AND MECHANICAL SYSTEMS.
2. REPORT TO ARCHITECT ANY CONFLICTS BETWEEN ELECTRICAL, MECHANICAL, OR STRUCTURAL DRAWINGS AND THIS LAYOUT.
3. ALL VISIBLE STRUCTURE, DUCTWORK, PIPES, CONDUITS, AND OTHER ASSOCIATED COMPONENTS NOT FULLY CONCEALED BEHIND A CONTINUOUS CEILING TO BE PAINTED.
4. ALL LIGHTS AND GRIDS ARE TO BE CENTERED IN ROOM, U.O.N.
5. CONTRACTOR RESPONSIBLE FOR WOOD STRUCTURE FOR GYPSUM CEILINGS PER PRESCRIPTIVE CODE METHODS.

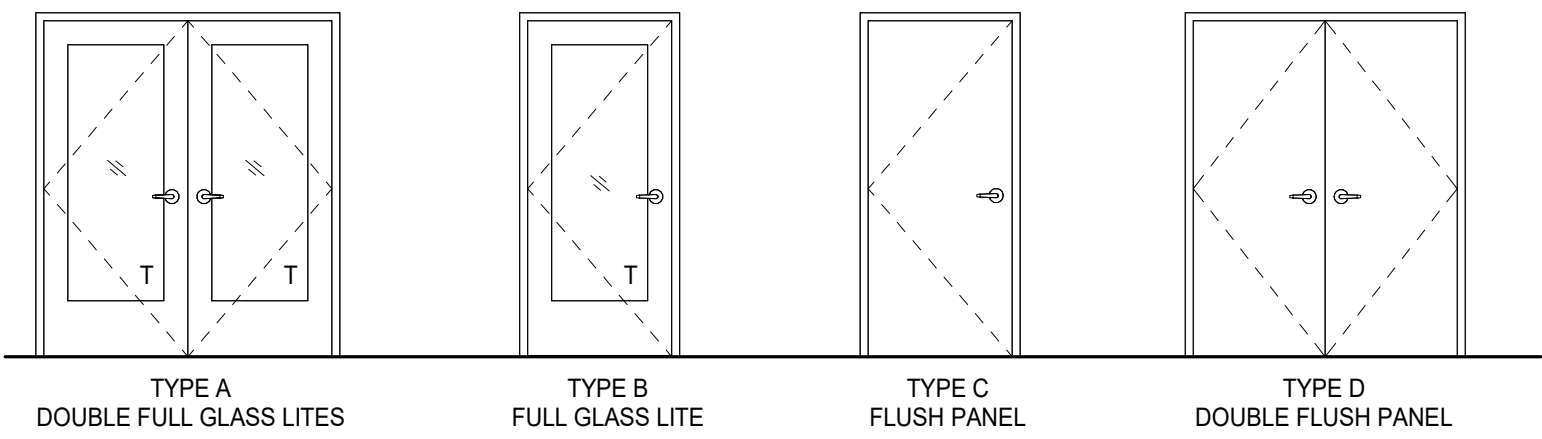
LEGEND

- CEILING SPOT HEIGHT
- FINISH CEILING HEIGHT ABOVE FINISH FLOOR
- 2X4 LIGHT FIXTURE
- 2X2 LIGHT FIXTURE
- EXIT LIGHT
- RECESSED CAN LIGHT
- SURFACE MOUNTED DOWNLIGHT
- SA GRILLE
- RA GRILLE
- EXHAUST FAN GRILLE

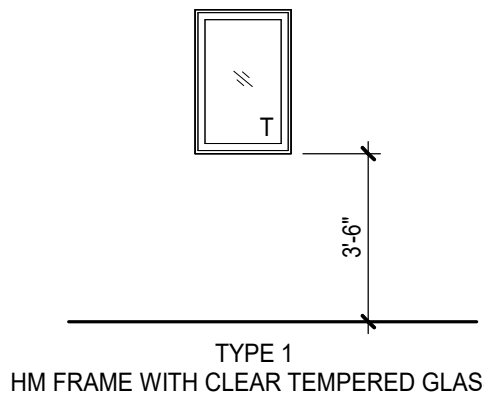
CEILING FINISHES

- SUSPENDED 24x48 ACOUSTIC CEILING TILE (ACT)
- SUSPENDED 24x24 ACOUSTIC CEILING TILE (ACT)
- EXISTING CEILING TO STAY
- GYPSUM BOARD ON 2X, PAINTED

DOOR TYPES



WINDOW TYPE



SHEET NOTES

1. "SAFETY GLAZING" SHALL BE PROVIDED IN ALL "HAZARDOUS LOCATIONS" DEFINED IN OSSC.
2. "T" ON FRAME TYPES INDICATES TEMPERED SAFETY GLAZING.
3. VERIFY IN FIELD ALL ROUGH OPENING DIMENSIONS

DOOR AND FRAME SCHEDULE

MARK	OPENING SIZE		DOORS			FRAMES			HARDWARE SET	FIRE RATING LABEL (MIN.)	NOTES
	WIDTH	HGT.	TYPE	MAT	FIN	MAT	FIN				
101	6'-0"	7'-0"	A	AL	CLEAR ANODIZED	AL	EXISTING	1	N/A	STANDARD 114" GLAZING, NOT THERMALLY RATED	
102A	6'-0"	7'-0"	A	AL	CLEAR ANODIZED	AL	EXISTING	1	N/A		
102B	6'-0"	7'-0"	A	AL	CLEAR ANODIZED	EXISTING	EXISTING	1	N/A		
103	3'-0"	7'-0"	C	WD	STAINED	HM	PAINTED	2	N/A		
104	3'-0"	7'-0"	C	WD	STAINED	HM	PAINTED	3	N/A		
105	3'-0"	7'-0"	C	WD	STAINED	HM	PAINTED	3	N/A		
107	3'-0"	7'-0"	C	WD	STAINED	HM	PAINTED	3	N/A		
108	3'-0"	7'-0"	C	WD	STAINED	HM	PAINTED	4	N/A		
109	3'-0"	7'-0"	C	WD	STAINED	HM	PAINTED	3	N/A		
110	3'-0"	7'-0"	C	WD	STAINED	HM	PAINTED	3	N/A		
111A	6'-0"	7'-0"	A	HM	PAINTED	EXISTING	EXISTING	1	N/A		
111B	6'-0"	7'-0"	A	AL	CLEAR ANODIZED	AL	CLEAR ANODIZED	1	N/A		
112	3'-0"	7'-0"	C	WD	STAINED	HM	PAINTED	3	N/A		
113	3'-0"	7'-0"	C	WD	STAINED	HM	PAINTED	3	N/A		
114	3'-0"	7'-0"	C	WD	STAINED	HM	PAINTED	2	N/A		
115	3'-0"	7'-0"	C	WD	STAINED	HM	PAINTED	2	N/A		
116	3'-0"	7'-0"	C	WD	STAINED	HM	PAINTED	2	N/A		
118	3'-0"	7'-0"	C	WD	STAINED	HM	PAINTED	2	N/A		
119	3'-0"	7'-0"	C	WD	STAINED	HM	PAINTED	4	N/A		
120	3'-0"	7'-0"	C	WD	STAINED	HM	PAINTED	4	N/A		
122	3'-0"	7'-0"	B	HM	PAINTED	HM	PAINTED	1	N/A		
123	3'-0"	7'-0"	C	WD	STAINED	HM	PAINTED	6	N/A		
124	3'-0"	7'-0"	C	WD	STAINED	HM	PAINTED	3	N/A		
125	3'-0"	7'-0"	C	WD	STAINED	HM	PAINTED	3	N/A		
126	3'-0"	7'-0"	C	WD	STAINED	HM	PAINTED	3	N/A		
127	3'-0"	7'-0"	C	WD	STAINED	HM	PAINTED	5	N/A		
128A	3'-0"	7'-0"	B	HM	PAINTED	EXISTING	EXISTING	1	N/A		
128B	3'-0"	7'-0"	C	WD	STAINED	HM	PAINTED	6	N/A		
129	5'-6"	7'-0"	D	WD	STAINED	HM	PAINTED	6	N/A		
130	3'-0"	7'-0"	C	WD	STAINED	HM	PAINTED	5	N/A		
131	3'-0"	7'-0"	C	WD	STAINED	HM	PAINTED	3	N/A		
132	3'-0"	7'-0"	B	HM	PAINTED	HM	PAINTED	1	N/A		

HARDWARE GROUPS

- HARDWARE NOTES
1. FINAL LOCK SETS TO BE COORDINATED WITH OREGON TECH PREFERRED DOOR HARDWARE PROVIDER
2. CONTRACTOR TO CONFIRM ACCESS AND LOCK SETS PRIOR TO ORDERING
3. OREGON TECH WILL PROVIDE CORES FOR ANY DOOR THAT IS LOCKABLE. ALL DOORS WITH LOCKS TO COORDINATE KEYING WITH OREGON TECH.
4. ALL EXTERIOR DOORS NEED HARDWARE SEALS AND THRESHOLDS AS REQUIRED.

OUTSIDE KEYED ACCESS WHEN LOCKED. INSIDE LATCH RELEASE.

SET - 1 EXTERIOR	QTY	DESCRIPTION
	3 EACH	HINGE
	1 EACH	CLOSER
	1 EACH	LOCK SET
	1 EACH	WALL STOP
	1 EACH	WEATHER STRIPPING
	1 EACH	THRESHOLD

OUTSIDE KEYED ACCESS WHEN LOCKED. INSIDE TURN/PUSH BUTTON.

SET - 2 OFFICE	QTY	DESCRIPTION
	3 EACH	HINGE
	1 EACH	LOCK SET
	1 EACH	WALL STOP
	1 EACH	SILENCER

BOTH LEVERS ALWAYS UNLOCKED.

SET - 3 THERAPY	QTY	DESCRIPTION
	3 EACH	HINGE
	1 EACH	WALL STOP
	1 EACH	SILENCER
	1 EACH	SOUND GASKETS

INSIDE THUMB TURN LATCH WITH OCCUPANCY INDICATOR.

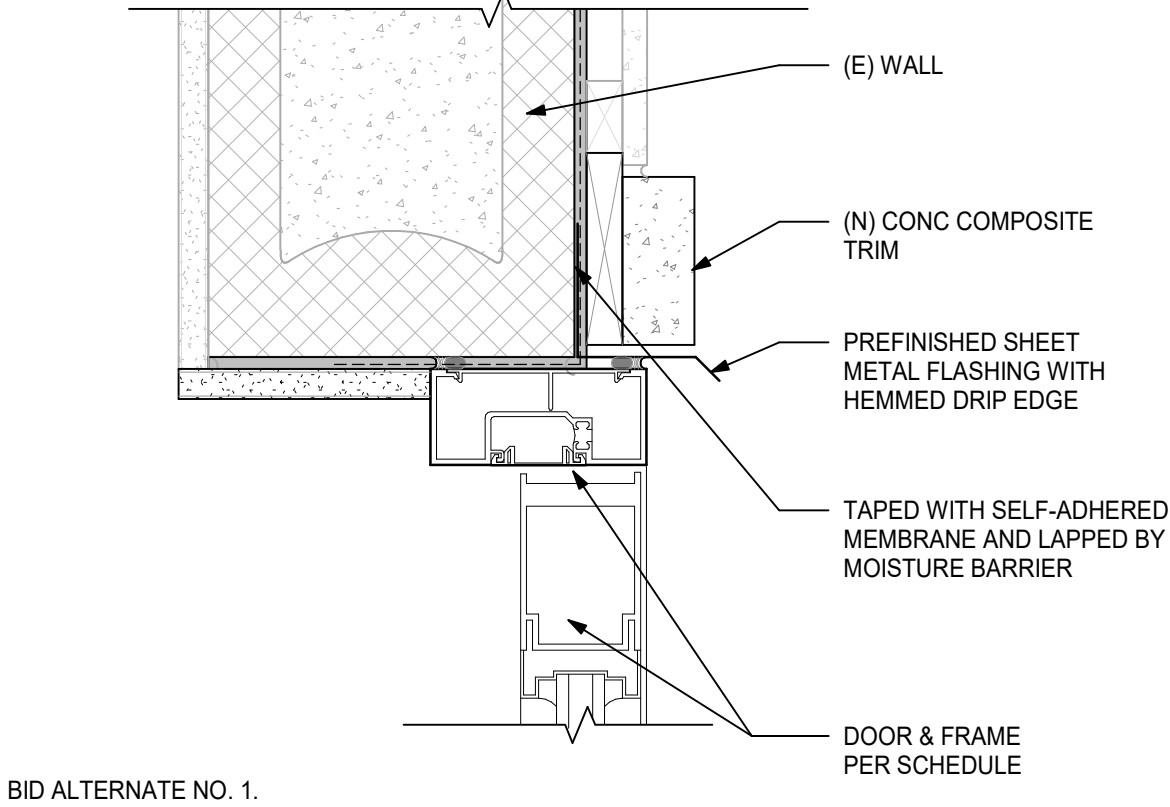
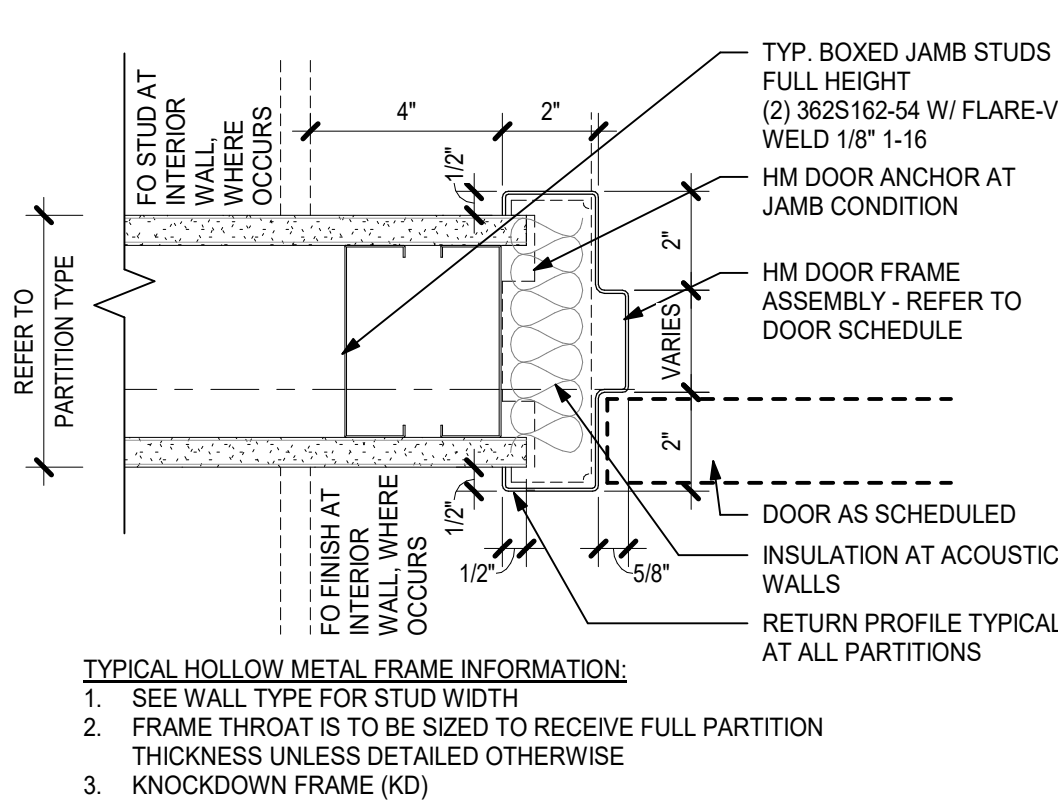
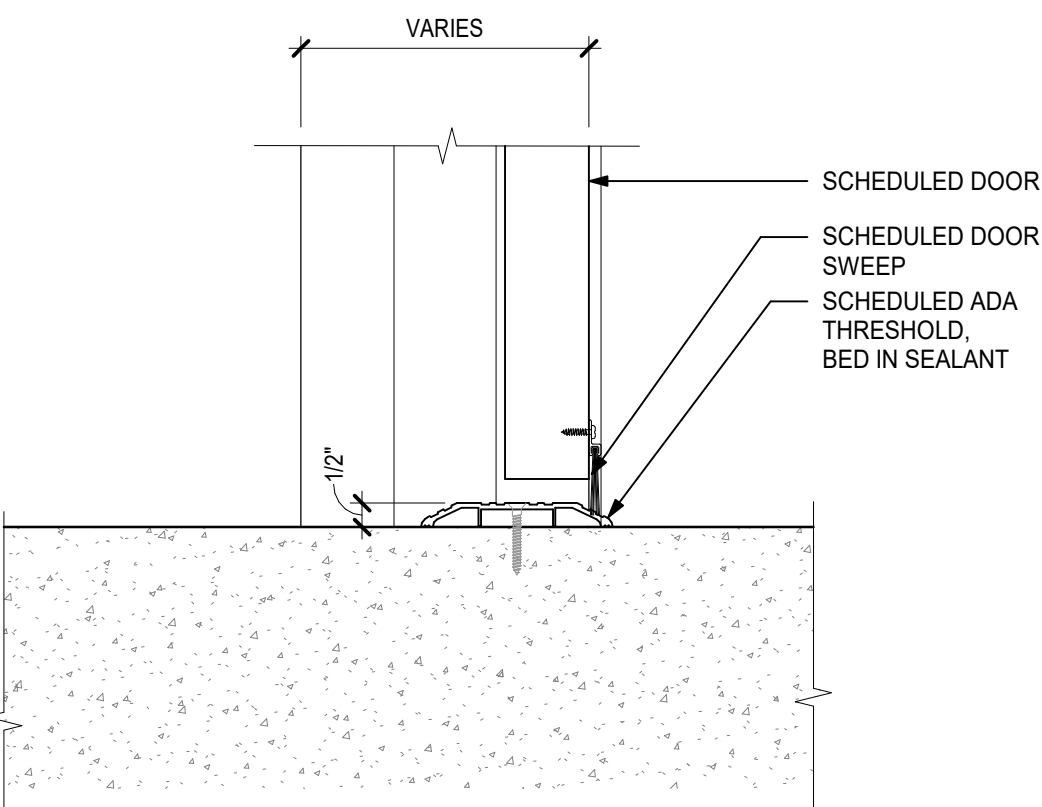
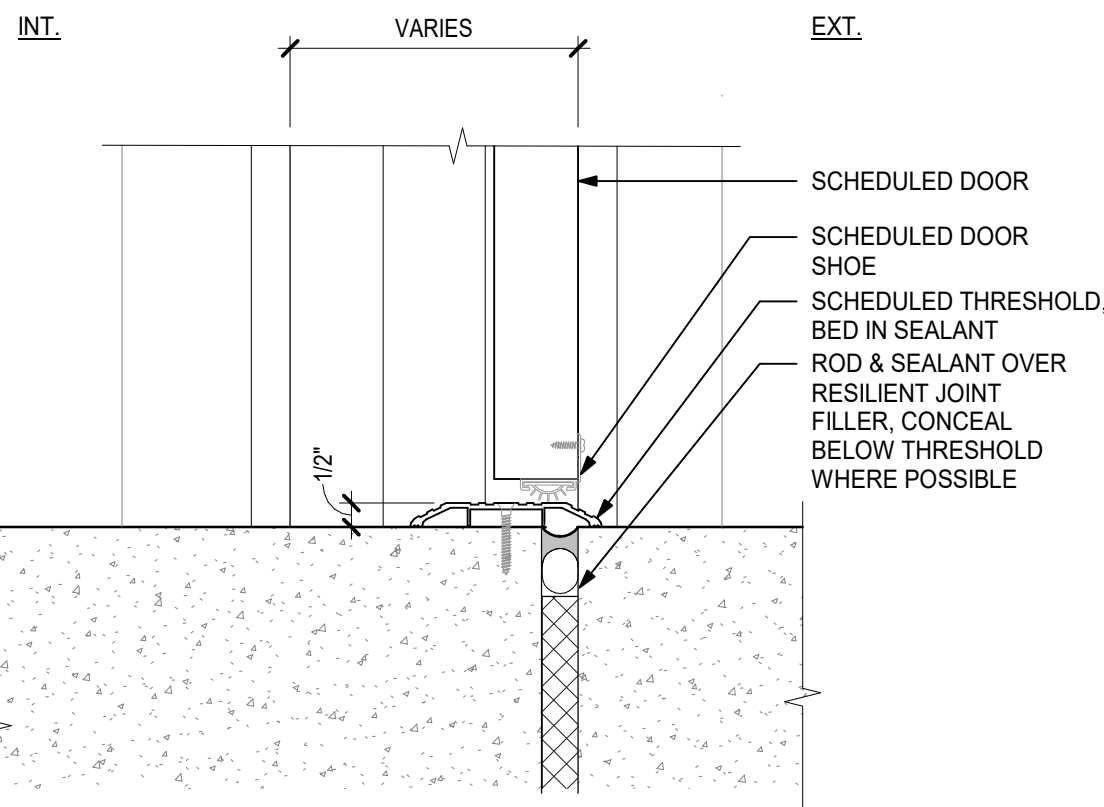
SET - 4 RESTROOM	QTY	DESCRIPTION
	3 EACH	HINGE
	1 EACH	CLOSER
	1 EACH	LOCK SET
	1 EACH	WALL STOP
	1 EACH	OCCUPANCY INDICATOR
	1 EACH	SILENCER

BOTH LEVERS ALWAYS UNLOCKED.

SET - 5 CORRIDOR	QTY	DESCRIPTION
	3 EACH	HINGE
	1 EACH	PASSAGE LOCK SET
	1 EACH	WALL STOP
	1 EACH	CLOSER

OUTSIDE KEYED ACCESS WHEN LOCKED. INSIDE ALWAYS UNLOCKED.

SET - 6 STOREROOM	QTY	DESCRIPTION
	3 EACH	HINGE
	1 EACH	STOREROOM LOCKSET
	1 EACH	WALL STOP
	1 EACH	SILENCER



BID ALTERNATE NO. 1.
PROVIDE INSULATED HM DOOR FRAME AND GLAZED DOOR IN LIEU OF STOREFRONT SYSTEM.
SEE DETAIL 8 AND 9 SIMILAR.

1 EXTERIOR DOOR THRESHOLD

A801 (3' = 1'-0")

2 INTERIOR DOOR THRESHOLD

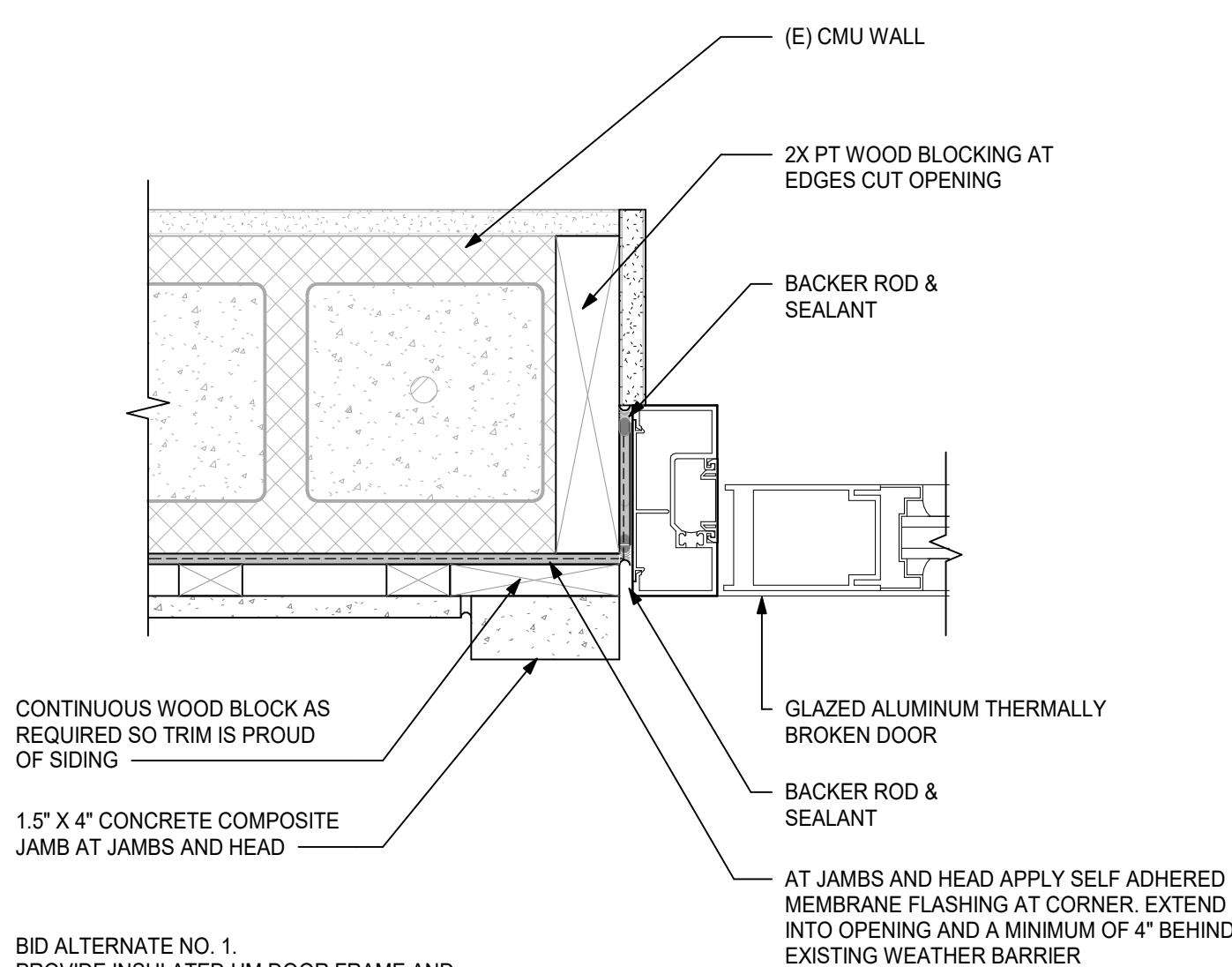
A801 (3' = 1'-0")

3 INTERIOR HM DOOR FRAME JAMB, HEAD SIM

A801 (3' = 1'-0")

5 EXTERIOR DOOR WITH GLASS LITE - HEAD

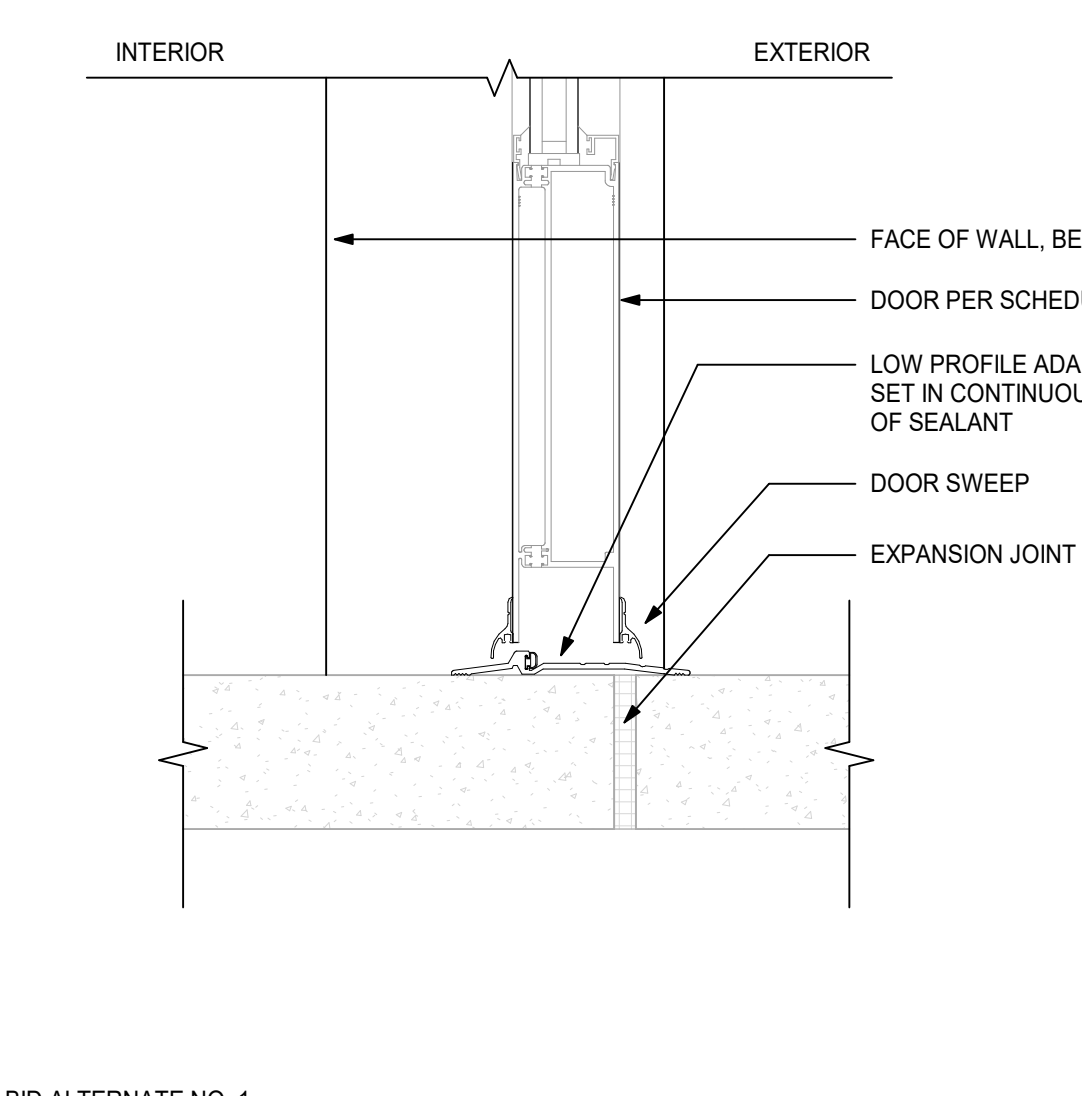
A801 (3' = 1'-0")



BID ALTERNATE NO. 1.
PROVIDE INSULATED HM DOOR FRAME AND GLAZED DOOR IN LIEU OF STOREFRONT SYSTEM.
SEE DETAIL 8 AND 9 SIMILAR.

6 EXTERIOR DOOR WITH GLASS LITE - JAMB

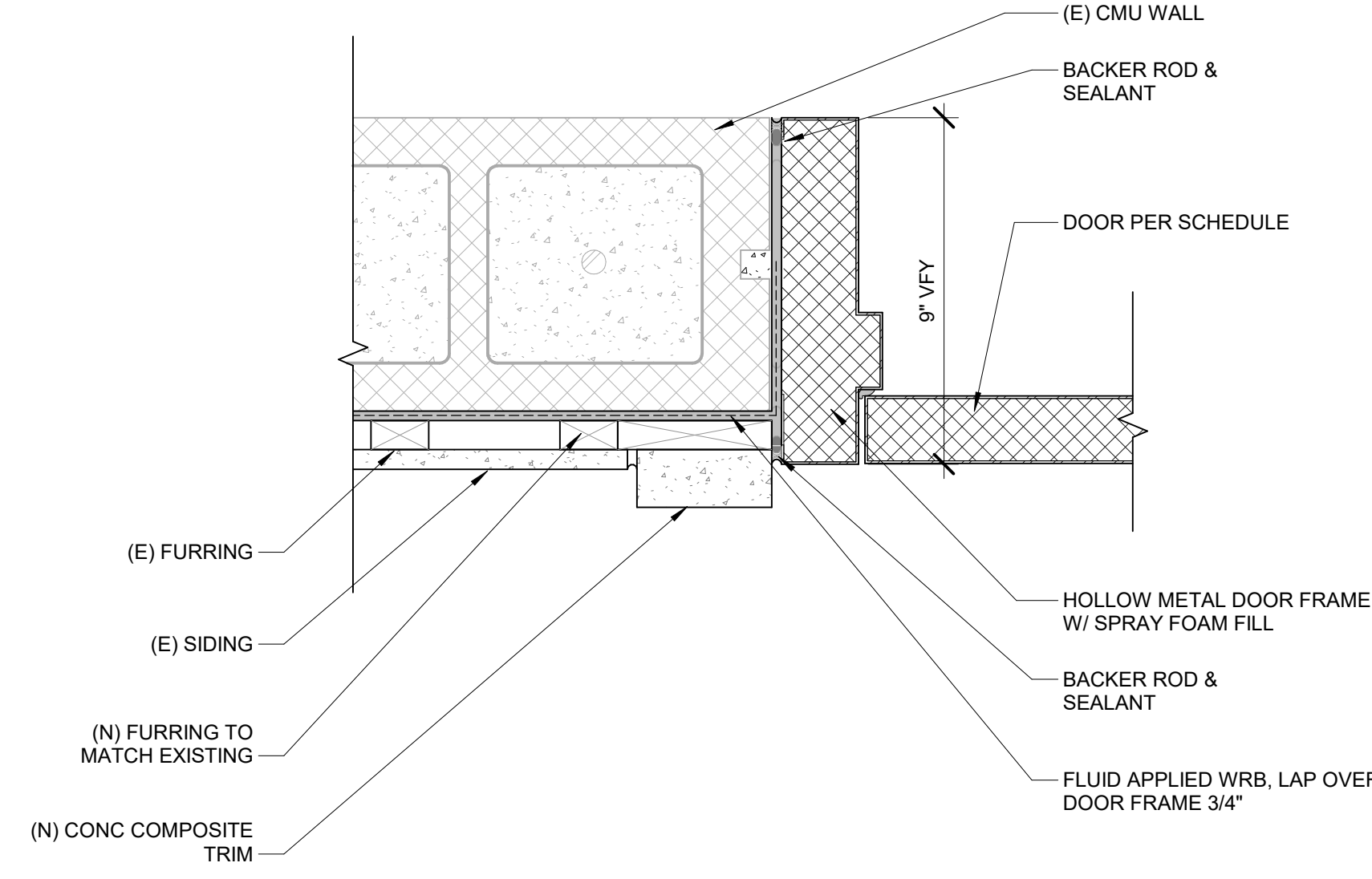
A801 (3' = 1'-0")



BID ALTERNATE NO. 1.
PROVIDE INSULATED HM GLAZED DOOR IN LIEU OF STOREFRONT DOOR.

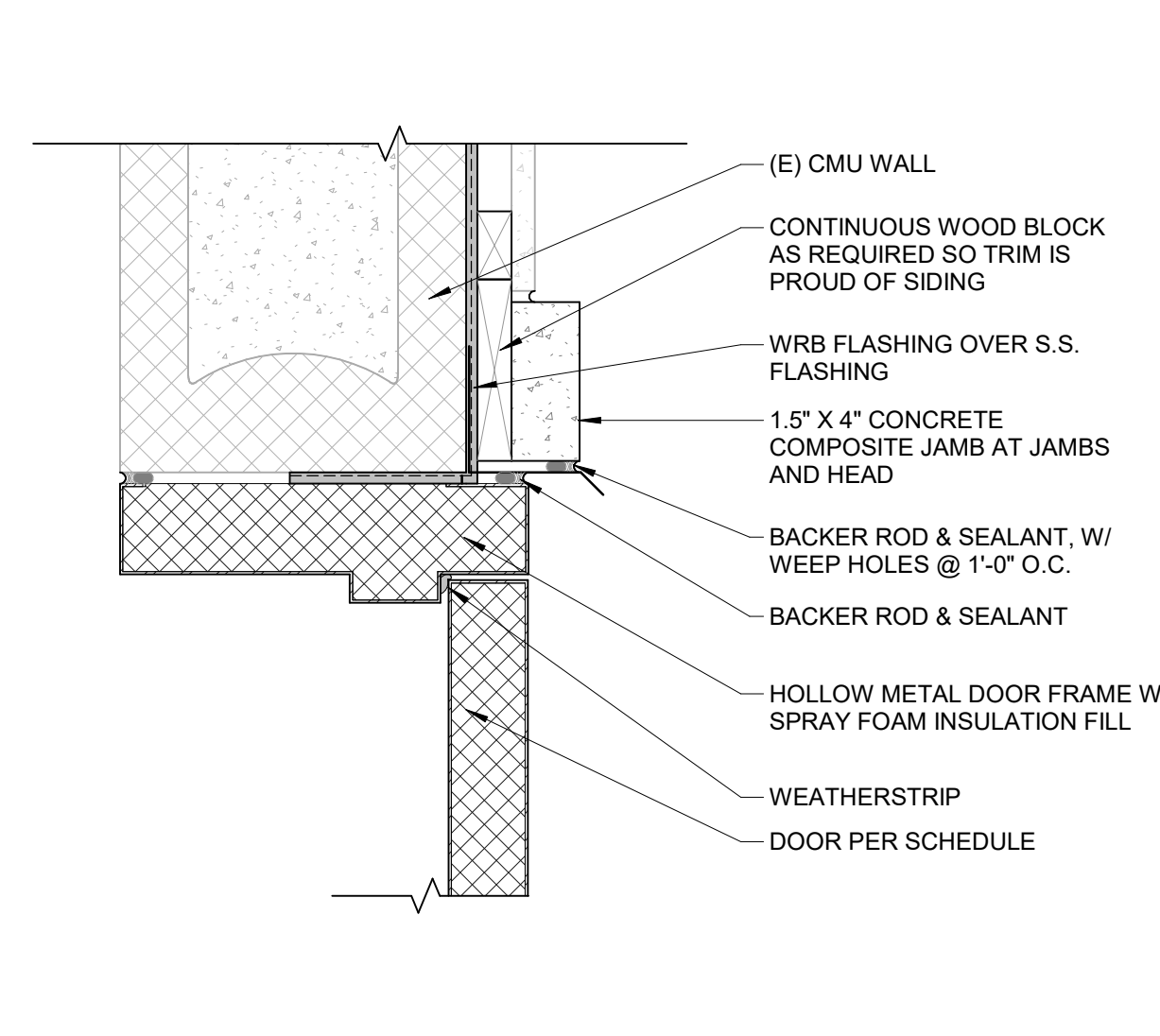
7 EXTERIOR DOOR WITH GLASS LITE - SILL

A801 (3' = 1'-0")



8 DOOR 122 JAMB

A801 (3' = 1'-0")



9 DOOR 122 HEAD

A801 (3' = 1'-0")

Revisions		
No.	Description	Date
1	ADDENDUM 01	Date 1
2	ADDENDUM 02	Date 2

Stamp



Issuance

Permit Set

Date

March 22nd, 2024

Project Number
23020

Drawing Title
DOOR SCHEDULE
AND TYPES,
DETAILS

Sheet No

A801